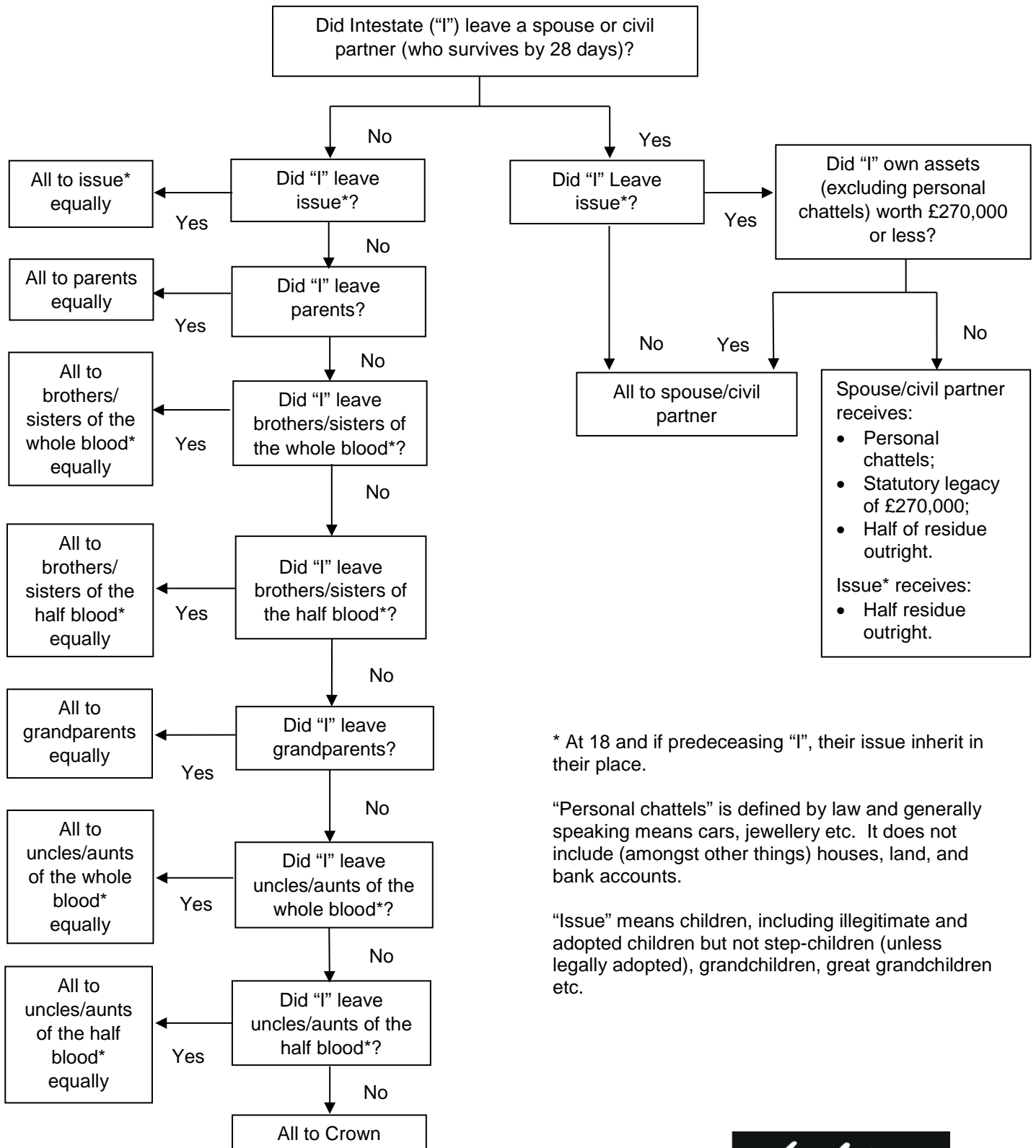


Intestacy Rules



* At 18 and if predeceasing "I", their issue inherit in their place.

"Personal chattels" is defined by law and generally speaking means cars, jewellery etc. It does not include (amongst other things) houses, land, and bank accounts.

"Issue" means children, including illegitimate and adopted children but not step-children (unless legally adopted), grandchildren, great grandchildren etc.

Why Ladders Solicitors?

With top tier rankings for private client legal advice from both Chambers and the Legal 500, we have a national reputation for excellence. With a dedicated team across three offices our services include all aspects of wills, trusts, estates and tax planning and care and capacity matters.

For further information please get in touch with your usual Ladders contact or via:

Stratford upon Avon office – 01789 293259

Henley in Arden office – 01564 792261

Cheltenham office – 01242 228370

© Ladders Solicitors LLP 2018

Whilst this firm believes the above information to be correct, it should not be regarded as sufficiently full, accurate or precise so as to apply to any particular situation. You must always seek legal advice concerning any situations referred to above. No responsibility for any loss suffered by any person as a result of acting in reliance upon the contents of this note can be accepted by this firm.

Ladders Solicitors is a trading name of Ladders Solicitors LLP Registered in England Partnership No OC306995 Regulated by the Solicitors Regulation Authority